

Punta PXR

- LED Recessed Downlight
- NON-IC, Indoor, Dry & Damp Location
- 120 VAC, 0,11 A, 60 Hz, 15 W
- Class 2 luminaire

Installation Instructions



**NE PAS TOUCHER LA PUCE LED (PARTIE JAUNE) À L'INTERIEUR DU LUMINAIRE ! CELA ENDOMMAGE LE LUMINAIRE !
DON'T TOUCH THE LED COB (YELLOW SEGMENT) INSIDE THE FIXTURE ! IT WILL DAMMAGE THE LIGHTING FIXTURE !**



Fig. 1

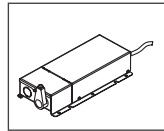


Fig. 2

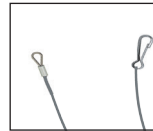


Fig. 3



Fig. 4

Fig. 1 Downlight

Fig. 2 Driver

Fig. 3 Aircraft cable

Fig. 4 Connector

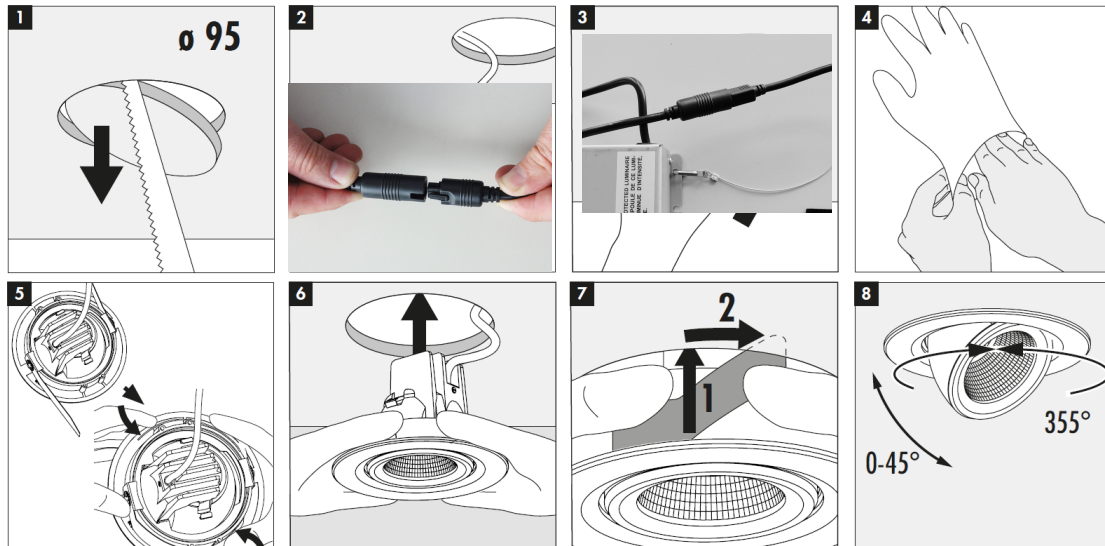
IMPORTANT: Read all instructions before installing luminaire. Retain for future reference.

This housing must be wired in accordance with local electrical codes and ordinances. All work should be performed by a qualified electrician.

Power must be turned OFF from the electrical panel before starting installation or attempting any maintenance.

INSTALLATION : Follow steps 1 through 6 :

1. Cut ceiling opening to 95 mm (3,75 '').
2. Connect power to LED driver and install in ceiling cavity.
3. Connect the luminaire with the driver (View 2).
4. Attach aircraft cable to driver for additional means of securement (View 3).
5. Retract ceiling tensioners of the luminaire and insert the downlight in the ceiling.



WARRANTY NOTICE :
DO NOT TURN ON CIRCUIT BREAKER TO BRANCH CIRCUIT UNTIL THE DRIVER & LED TRIM ARE ADEQUATELY WIRED TOGETHER AS POWERING THE DRIVER WITH NO LOAD CAN INCREASE FAILURES.

Punta PXR

Installation Instructions

1. Turn of power at the circuit breaker and ensure that the power is off before wiring.
2. Connect wire cord to single branch circuit as per following. It should be in accordance with national and local codes.
3. For 120V connect the black fixture lead to the voltage supply position of the terminal block or Hot.
4. For 120V connect the white fixture lead to the neutral supply position of the terminal block neutral.
5. Connect the green ground lead to the green wire position of the terminal block.
6. For 0-10V dimming connect the grey (-) and pink (+) fixture lead to the terminal block (+) and (-).

